

# NECESSARY ELEMENTS TO MAKE IT WORK

## P-SBS Screen: Touch Screen and Controller



This is the control point in the multiplex. You only need one, located in the central rack or inside an standalone box at the office.

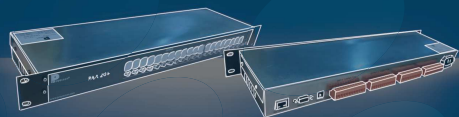
## P-SBS Power Module and contactors



Group of electrical contactors. You need one of these groups per screen.

1. Choose the devices you want to remotely and independently switch in each booth: projector, server, sound rack, booth HAVC ...
2. Figure out the power contactor needs for each device: There are 3 different power contactors available 16A, 25A and 40A
3. Check if there is space in the electrical panel of each booth to place them.
4. Select the location of the contactors in each room: Electrical panel, pedestal or sound rack
5. Order a P-SBS Power Module to place the contactors in pedestal or sound rack

## PAA20+ Automation Adapter



This is the device that will allow you to remote the contactors and also control lights, maskings, security systems ... You just need one per screen

# SMART SOLUTIONS

FOR CINEMA EXHIBITORS

PROJECTION  
SYSTEMS



AUDIO  
SYSTEMS

CINEMA  
OUTFITTING



ACCESSORIES  
& SCREENS

SOFTWARE



CUSTOMER  
SERVICE

CONSULTING



FINANCING

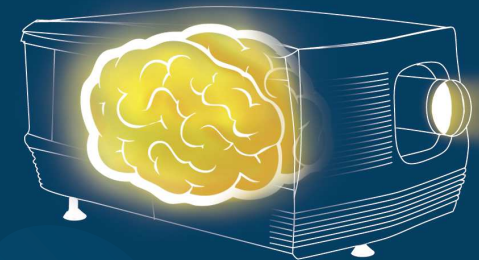
CONTENT  
MANAGEMENT



PREMIUM  
CONCEPTS

Is your cinema booth

# SMART?



Find out how to do it with

# SMART BOOTH SOLUTION P-SBS

Contact your  
Cinemanext local office

[www.cinemanext.com](http://www.cinemanext.com)

# SO EASY TO ACHIEVE A SMART CINEMA BOOTH

- 5 Steps x screen without P-SBS
- 1 Single step x multiplex with P-SBS

Possible locations:

- ★ 1 PAA20+ Automation Adaptor
- ★ 2 Touch screen
- ★ 3 Contactors

## WITHOUT P-SBS

Operator must go through all projection booths to power on devices from electrical board

Power on server when projector is on

Power on HAVC

Power on projector and wait

Power on lights in theatre

Power on sound rack

## TWO INSTALLATION OPTIONS

P-SBS Touch Screen installed in a RACK



3U rack module



P-SBS Touch Screen installed at any desired location

**Time:**  
between 10-20 minutes

**Consumption:**  
Expensive energy peaks depending on operator's workflow

**Time**  
1 second

**Consumption**  
No energy peaks thanks to delayed and careful power on procedure

Repeat the same steps in the other rooms

**ONE SINGLE CLICK TO:**

### Projector

- Check if Projector is on-line
- Check current macro
- Check lamps hours
- Power it on/off

### Sound

- Reset the Sound Processor
- Change the preset in Sound Processor
- Turn up and down the volume
- Check if Sound Processor is on-line
- Turn on and off the power supply in sound rack

**Air Con (HAVC)**  
You can even turn the air con on and off

You can program the progressive lighting of the rooms

**PROGRESSIVE IGNITION TIMING**

### WITH P-SBS

Just click power on button on P-SBS. That's all !!!!

### Lights

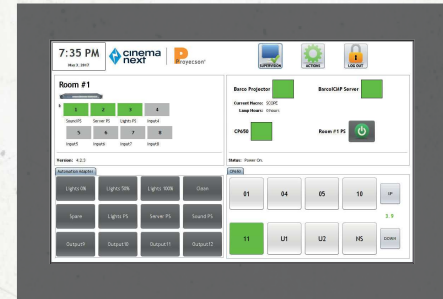
Call a light scene: movie, intermission, cleaning

### Power

- Power on/off any room independently
- Power on/off all rooms in one shot

### Server

- Check if it is playing / disconnected / paused
- Check the current movie playing
- Check duration, remaining time, end time
- Power it on/off



Monitor and remotely control Projector, Server, Sound Devices, HAVC, Lights and more